



thinkingbricks limited

home cinema • multi-room audio & video • lighting control • networking & system integration



Bachelor Pad

Summary: Lounge based, 5.1ch home cinema installation
Location: Cambridgeshire
Budget: £3000

Mr. R contacted thinkingbricks about having a plasma TV installed into a flat he had recently purchased. He had been to several AV retailers before being referred to our website by a friend.

We visited the flat to discuss the project and review the location Mr. R had planned for the plasma. The integrity of the supporting wall he had selected was not viable (not load bearing and moved on moderate pressure).

We discussed the issues around fixing the plasma to this wall. Mr R had recently decorated and did not want to undertake any messy, remedial work.

We found the solution in the loft space above and the possibility of a ceiling pole mount. To achieve the clean look, we discussed the bracket being installed in the loft, with just the pole visible through a 60mm hole. Mr. R agreed that ceiling mounting was the best option.

The equipment cabinet was to be sited some way from the plasma itself, and the wiring had to be "invisible". Mr. R wanted to integrate other sources into his plasma, including a games console and his laptop PC (for working in the lounge, with a wireless keyboard and mouse).

We talked through the benefits of using the plasma as a monitor (video only), and using a surround sound system to match the larger image. This was far better than using plasma mounted speakers for movie sound.

The brief and site survey enabled us to build a fee proposal. We provided a plasma monitor recommendation, configured with video boards to cater for the connections necessary. We sourced a matching AV receiver, DVD player and 5.1ch speaker package. A schematic for all audio and video interconnects was prepared for the installation.

The installation:

The first part of the installation was the trial mounting of the plasma for height in line with client's needs. We agreed the site for the pole to drop from the ceiling. The ceiling was masked and the hole drilled.

The video cables were run from the agreed location for the home cinema receiver / DVD / satellite, "invisibly" across the loft and through the pole mount.



thinkingbricks limited

home cinema • multi-room audio & video • lighting control • networking & system integration



The speaker cables were laid across the loft and came through close to the ceiling line in the corners of the room. This gave a wide sound stage within the room below, and ensured the speaker locations were as discrete as possible.

The speaker cable for the centre speaker was run through the pole mount, to ensure the centre speaker was located close to the screen, and the cable was not visible from the viewing position.

The video and audio cabling for the equipment was ordered and recessed into a wide, low profile conduit, mounted to the wall. This ensured the wires were accessible (the client was unsure of how long he would stay and requested a comparatively easy un-install) but not visible from the lounge.

The client had purchased a cabinet prior to installation, which was to double as file storage in the "office" corner of the flat and wanted to use this cabinet to house the AV equipment. The dimensions of the Harman Kardon equipment ensured the equipment fitted, with a 2mm overhang on the receiver when connected and installed, and adequate ventilation.

We ensured that the cables to connect the games console for video and audio, were long enough to allow him to have the console in the lounge for changing games / connecting the controllers. The client could store the console alongside the other AV equipment in the cabinet, when not in use.

The system was fully tested, for audio and video. The client's Shrek 2 DVD used to test the display for colour and clarity. The 5.1ch set up was fine tuned, with the client in his everyday listening position and signed off by an "impressed" client before leaving site.

The first test? A movie after a night at the local pub for his mates that evening. Our installation passed with flying colours...and surround sound!

Final cost of the installation to client:

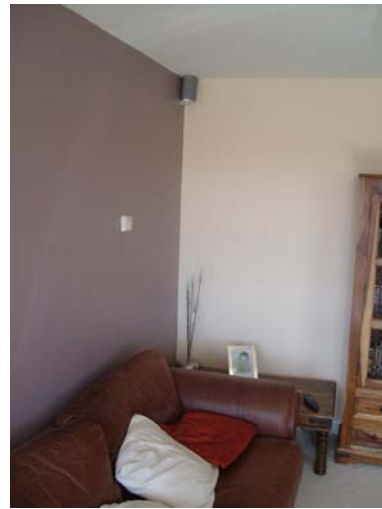
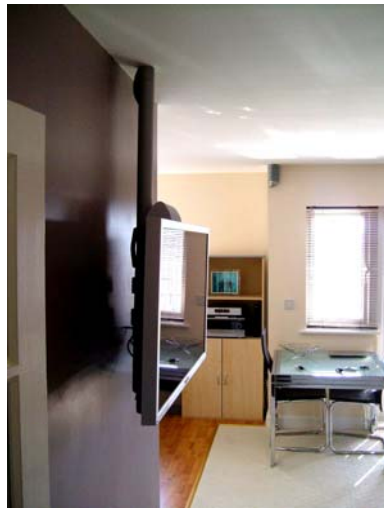
£2950 inc VAT and labour



thinkingbricks limited



home cinema • multi-room audio & video • lighting control • networking & system integration



The plasma, as you enter the room, and discrete speaker locations



The pole mount and the silver edge of the plasma matched perfectly



The equipment, installed tidily and matching DVD and AV amplifier